



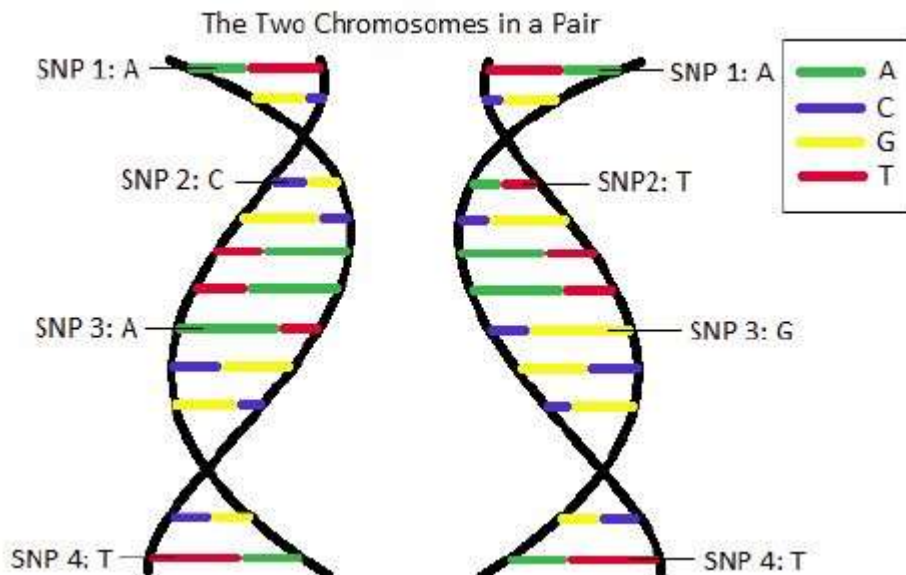
Newsletter – 31 May 2012

www.familytreedna.com/group-join.aspx?Group=Hawkins&Code=Z47192

mixed from one generation to the next. Every person has 46 chromosomes in total, 23 from each parent. 2 of these 46 chromosomes are the sex chromosomes. The other 44 are autosomal chromosomes.

The autosomal chromosomes come in pairs, with one chromosome from each parent in every pair. The 22 pairs are numbered 1 through 22. Testing autosomal SNPs yields two results for each SNP because the same position in the DNA sequence exists in both chromosomes in a pair. The two results may not be the same, though, depending on what DNA you received from your parent.

Here is a brief example of what these results look like:



Combined: SNP 1 = AA, SNP 2 = CT, SNP 3 = AG, & SNP 4 = TT

What do the letters mean? Each letter refers to a base in the DNA sequence (similar to a letter in a sentence). The four bases are represented by the letters A, C, G, and T. Two A's mean that the SNP result on both chromosomes is an A. One C and one T mean that one of the chromosomes has a C for this SNP and the other has a T.....

Technology Tip of the Month--Creating a Mask Using Adobe Photoshop Elements before Version 9 by Kay Spears

Last month we explored how to blend images using the Mask Tool in Adobe Photoshop Elements versions 9 and 10. Older versions of Elements do not have that tool, but there is a way to create a mask tool by using "Layers and Levels." I'll explain how.

First, open two images that you want to blend together. Make sure that you can see both in your Elements workspace. Next, you will drag one image to the other. Select the Move Tool from the top of the Tools palette. To drag one image to another, click on one of the images. Holding the left mouse button down, drag the image over and drop it onto the second image. You also may use the Layers palette, by clicking on the layer you want to move. Holding the left mouse button down, drag the layer over to the destination image and drop it. Look at the destination image. There will be two layers present, a Background layer and Layer 1.

Next, you will add another layer to the Layers Palette for your mask. Make sure that this layer is between the two previously existing layers. First, click on the Background layer on the Layers palette. Then, click on the "New Adjustment Layer" icon. This icon's location on your Layers palette will vary depending on the Elements version you have, but it looks like a circle with black and white on it, similar to a Yin-Yang symbol. After you click on this icon, you will need to choose a type of adjustment from the menu. It really doesn't matter which

one you choose, but for this discussion, select Levels. Now, on your Layers palette you should have three layers. The middle one will have thumbnail images that appear to be a chart or gears (depending on your version of Elements) and a white rectangle. This is the layer that you will use to blend the images together.

To begin joining the layers together, click on "Layer 1." Next, go to the Layers menu at the top of your screen (the main menu) and choose "Group with Previous." This selection is only available in older versions of Elements. In version 8, the correct choice is "Create Clipping Mask." Or, you may use CTRL+G for all versions. Nothing will appear to have happened, but if you look closely at the Layers palette, you will see that there is a slight indentation of the thumbnail image in Layer 1.

Next, you need to have the second layer selected (your mask layer), so click on the white rectangle thumbnail on that layer. Select the paint brush on the Tools palette and make sure that the color on the color palette is black. Set the Brush tool to the opacity and size you desire and start painting out the area you don't need. You will see the bottom layer begin making its appearance. That is how you mask an image without having a Mask Tool in Adobe Photoshop Elements.

Next article: Further Exploration of Adobe Elements/Photoshop.

Quick-Tip of the Month for Preservation--Ideas for Storing Those Old Family Garments

Some families have heirlooms, ancestors' military and other uniforms, and special occasion items such as wedding dresses and ancestral quilts that need appropriate attention to ensure their longevity. The Minnesota History Center has a very informative website offering tips on how to display, store, and clean clothing and textiles. <www.mnhs.org/people/mnagg/stories/textiles.htm> There are many other worthwhile websites that can help address nearly any preservation need involving clothing and other material items, including a video entitled, "Preserving Our Clothing and Textile Heritage" by Dr. Michael Marendy. At a run time of two minutes and thirty-five seconds, it's a quick watch. <www.youtube.com/watch?v=VIGPPWdgZtw>

To subscribe to "*Genealogy Gems*," simply use your browser to go to the website: www.GenealogyCenter.org. Scroll to the bottom, click on E-zine, and fill out the form. You will be notified with a confirmation email.

If your Family Group does not have an Assistant Administrator, it is not being provided the assistance that is wanted. It is just no longer possible for me to provide the attention to the individual family groups as I have tried to in the past. It is not necessary that the Group Administrator be a testing participant, just a keen interest in advancing the knowledge within their family group. The family Groups that we have identified that do not have a leader are 03, 06, 09, 13, 15, 16, 18, 19, 20, 21, and 22. Volunteers please!

-----***_***-----

Input from our Hawkins Family Groups. The family pages are found at
http://freepages.genealogy.rootsweb.ancestry.com/~hawkinsdnaproject/tree_g-1.html.

Hawkins Family Group-01 (Group Administrator is Marsha Moses, mosesm@earthlink.net)
http://freepages.genealogy.rootsweb.ancestry.com/~hawkinsdnaproject/tree_g-1.html#Group-01



Matilda Pinkard in Culpeper County in 1823.

The month of May held a very special event for me! I visited Gene Hawkins in Warren County, Ohio. Gene is my dad's closest DNA match. The celebration took place over dinner at the Golden Lamb with Gene's wife and several of his family and friends. It was a VERY special evening! I was in Cincinnati for the National Genealogical Society's Annual Conference only a 35 minute from Warren County. Gene and I do not yet know who our common Hawkins ancestor will prove to be. Gene connects to James and Jane Bourne Hawkins, who were married in Culpeper, Virginia probably 12 April, 1781. This couple moved to Kentucky after the Revolutionary War where James Hawkins died 2 Mar 1819 in Anderson County, Kentucky.

James was the son of Benjamin and Sarah Willis Hawkins. Benjamin Hawkins died c.1782 in Culpeper County, Va. My Hawkins line has earliest ancestor, Thomas R. Hawkins who was born c. 1797 in the same general area of Virginia as Gene's early ancestors. Thomas R. Hawkins lived most of his life in Orange County, Virginia which adjoins Culpeper. He married

I believe that it is almost a certainty that Gene and I will find common ancestors in the Northern Neck of Virginia one, two, or three generations before what we know now. Perhaps our connection will be as early as the 17th Century. Other researchers have told me that Benjamin Hawkins who married Sarah Willis had father, John Hawkins who died before 1716 in Richmond County, Virginia (a part of the Northern Neck of Virginia). The below information may or may not relate to Hawkins DNA group #1. I am mostly brainstorming to see if anyone in DNA group #1 or any other Hawkins DNA group recognizes anyone or anything that might be a clue for all of us.

See Marsha's *Blog* at <http://www.marshamoses.blogspot.com/>.

Many of you that are descendants of this Hawkins line have stories and pictures that others do not. How about contributing?

Hawkins Family Group-02 (Group Administrator is Bob Hawkins, bobhawk507@sbcglobal.net)
(http://freepages.genealogy.rootsweb.ancestry.com/~hawkinsdnaproject/tree_g-1.html#Group-02)

The earliest ancestor of Group 2 is William Hawkins born about 1721 and died in 1799. William lived in Orange Co., VA and was married to Elizabeth Wall. Much has been written about this line of the Hawkins family. Unfortunately, much of what you read is guesswork by many individuals. Most genealogies list this William as William II a son of William Hawkins and Mary or Margaret Smith. I find no evidence to support this and find that a number of genealogies list a son Aaron born in Marion, VA. There is no mention of an Aaron in any of the records of William and his descendants. Who comes up with all of this misinformation? If you accept information without fact you are indeed guilty.

This is what we know of William: He was probably (not a proven fact) born in Spotsylvania, VA and lived his life in Orange Co., VA. He was very active in Orange Co. and his signature appears on many of the early records. These include road, tax, and political records. He is mentioned several times in the book "Patriots of the Upcountry". His name has been associated with many lines of the Hawkins family, but DNA testing has shown that there are but only a small number of descendants in Group 2.

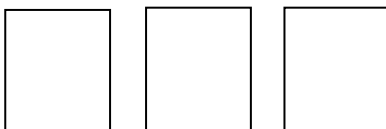
The truths of who belongs where are becoming clearer as more and more people submit to DNA testing. But how can we clear up this mess that has been created by the internet? This info is almost permanent for generations to view. And try telling someone that the info they posted is wrong and should be removed or corrected. Most of the people that I have contacted are offended when told that they may be mistaken. Continue to urge Hawkins descendants to be tested. This is the only way we can clear up the guessing game.

Hawkins Family Group-04 (My, your editor's, family group, phil_hawkins@sbcglobal.net): Earliest known common ancestors are Jeffery and Dorothy (Mattock) Hawkins, emigrating from Wilts, England in 1682 to Bucks Co., PA.

(http://freepages.genealogy.rootsweb.ancestry.com/~hawkinsdnaproject/tree_g-1.html#Group-04)

Last month I wrote that I would like to run pictures for family group participants of the males (with wives OK) in your direct Hawkins line. Pictures with faces that are 3/4" in size should be scanned at 300 dpi. If smaller, scan at 600. Do not send pictures with a resolution of 72 or 96 dpi unless they are very large."

Following are some of the pictures received from last months request.



If you sign in at FTDNA, and under Genetic Reports select "Y-DNA Results Colorized," you can view our Group 4 and see how very little we have been affected by mutations.

Please, those of you that could not find time last month, send pictures of your male line.

Phil

Hawkins Family Group-07 (Group Administrator is Jeff Hawkins, jhawk1128@comcast.net) The Group-07 family pages at http://freepages.genealogy.rootsweb.ancestry.com/~hawkinsdnaproject/tree_g-1.html#Group-07

Group_07 has a new Group Administration, Jeff Hawkins, jhawk1128@comcast.net. Sara has done a GREAT JOB, but feels that she needs a bit of personal time. Sarah, we all appreciate your past efforts, and thank you for your giving of yourself for the promotion and good of the group.

Jeff will need all your help to keep adding to the Group knowledge. Please touch base with him, and tell him a bit about yourself and your part of the line.

*** **

If you maintain a web site with Hawkins information, please add a link to our Hawkins DNA Project. If you maintain a website that relates to any of our Hawkins DNA lines, please advise, and I'll list a link for it on our site.

*** If you know someone that would like to be on the Hawkins project information mailing list, please send me their name and email and I'll add them. Anyone that desires not to be on the list should request removal.

*** Please advise us of any planned Hawkins reunions. We would like to list them indicating the patriarch, place, dates, and any other special information. Consider collecting donations to have some of the cousins in your group tested. Maybe you have the perfect paper records, but the mutations that occur in the separate lines need to be identified now for succeeding generations (and just maybe, your paper records are not as solid as you assume).

*** If you have tested with someone other than Family Tree DNA please contact me about also participating in our Hawkins Project.

*****Reprints:** Permission to reprint articles from the *Hawkins DNA Newsletter* is granted unless specifically stated otherwise, provided the reprint is used for non-commercial, educational purposes; and the following notice appears at the end of the article: Previously published in the *Hawkins DNA Newsletter* 2012-05_31 May 2012.



Phil Hawkins - 2010

Phillip A. Hawkins, Administrator, Hawkins Worldwide
DNA Project [No compensation received]
Hawkins DNA Newsletter 2012-05_31 May 2012

