

T E N N E S S E E

HARDIN COUNTY

T1S

T2S

T3S

T4S

T5S

T6S

T7S

T8S

T9S

T10S

T11S

T12S

T13S

T14S

T15S

T16S

T17S

T18S

T19S

T20S

T21S

T22S

T23S

T24S

T25S

T26S

T27S

T28S

T29S

T30S

ITAWAMBA COUNTY

R 9 E

R 10 E

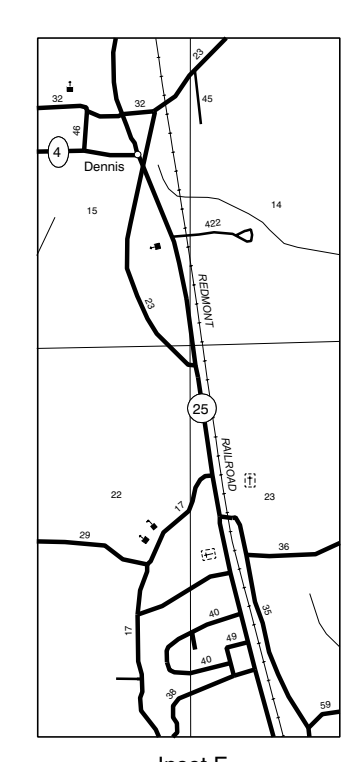
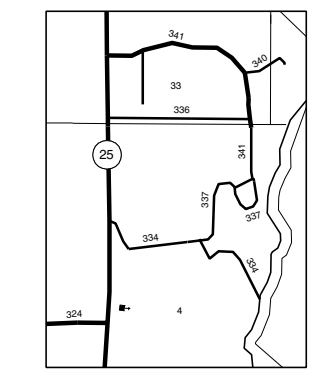
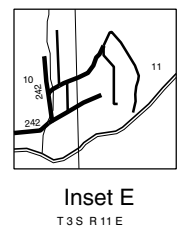
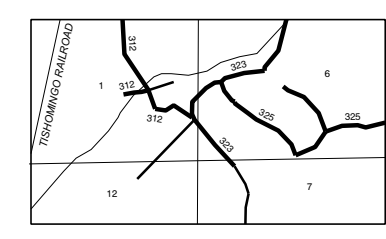
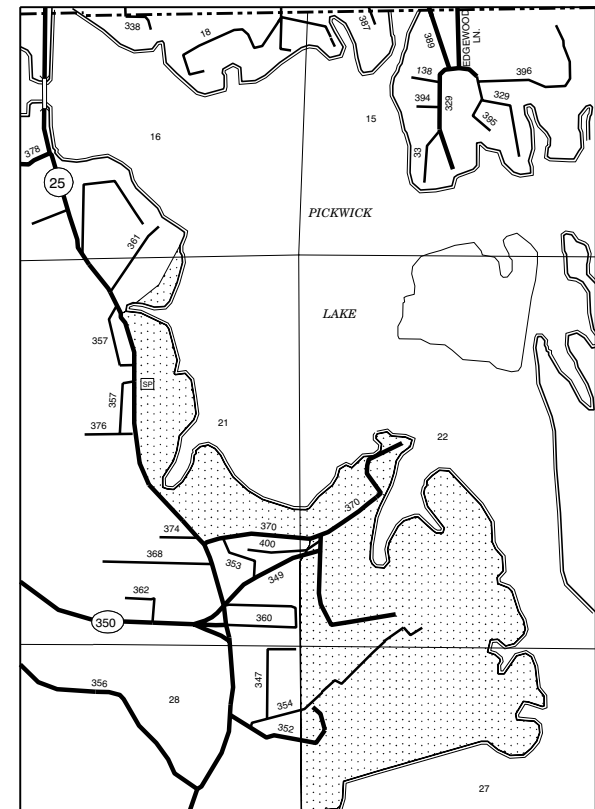
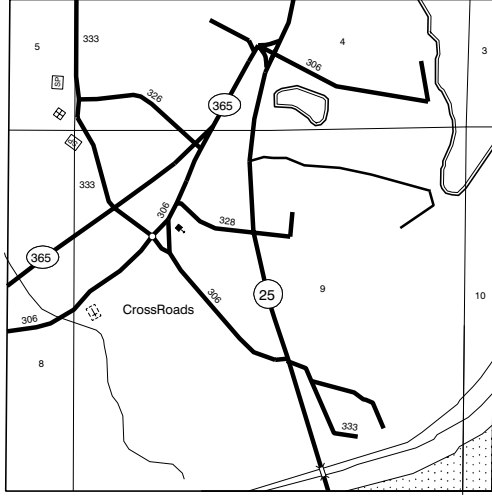
R 11 E

R 12 E

R 13 E

R 14 E

R 15 E



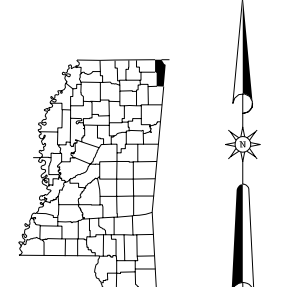
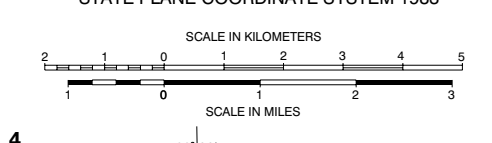
LEGEND

- ROADS AND ROADWAY FEATURES**
  - UNIMPROVED ROAD
  - GRAVEL
  - PAVED ROAD
  - LANDSCAPED HIGHWAY
  - DIVIDED HIGHWAY
  - INTERSTATE SYSTEM
  - CITY STREETS
- HIGHWAY BRIDGES**
  - BRIDGE 50 FEET AND OVER
  - DRUMBRIDGE
  - FERRY (FREE OR TOLL)
  - HIGHWAY GRADE SEPARATION
  - HIGHWAY INTERCHANGE
- ROAD SYSTEM DESIGNATION**
  - INTERSTATE NUMBERED
  - U.S. NUMBERED
  - STATE NUMBERED
- RAILROADS**
  - RAILROAD STATION
  - GRADE CROSSING
  - RAILROAD ABOVE
  - RAILROAD BELOW
- AIRPORTS**
  - MILITARY AIRPORT
  - AIRPORT LIMITED FACILITIES
  - LANDING AREA OR STRIP (INCLUDING PRIVATE AIR FIELDS)
  - AIRPORT, COMPLETE FACILITIES
  - AIRWAY LIGHT BEACON
- DRAINAGE AND NATURAL FEATURES**
  - NARROW STREAM
  - DRAINAGE DITCH
  - LAKES AND RESERVOIRS
  - OVERFLOW LAND
  - MARSH OR SWAMP LAND
- BOUNDARIES**
  - STATE BOUNDARY
  - COUNTY BOUNDARY
  - SEAT LINE
  - CONGRESSIONAL TOWNSHIP
  - SECTION LINE
  - NATIONAL OR STATE FOREST
  - RESERVATION, PARKS, ETC.
  - URBAN AREA COMPACT
  - INCORPORATED PLACES
  - UNINCORPORATED DELIMITED AREAS
- NAVIGATION**
  - DOCK, PIER, OR LANDING
  - LEVEE OR DIKE
  - LEVEE OR DIKE WITH ROAD
- CITY AND VILLAGE CENTERS**
  - COUNTY SEAT
  - OTHER CITIES AND VILLAGES
- MISCELLANEOUS**
  - TRIANGULATION STATION
  - BENCH MARK WITH ELEVATION
- PUBLIC SERVICE FACILITIES**
  - OBSERVATION OR LOOKOUT TOWER
  - HIGHWAY GARAGE
  - POST OFFICE
  - POWER PLANT
  - WEIGHT STATION
  - HOSPITAL
  - SEWAGE DISPOSAL PLANT
  - COMMUNITY CENTER OR TOWNHALL
  - NATIONAL PARK GARAGE
  - FIRE STATION
  - PUBLIC LIBRARY
  - SMALLER LAND FILL
  - CORRECTIONAL INSTITUTION
  - POLICE STATION
  - GRAVEL PIT
  - REST AREA
- CONSERVATION AND RECREATION**
  - MOTEL OR HOTEL
  - CAMP OR LODGE
  - HISTORIC OR SCENIC SITE
  - FAIR GROUNDS OR RACE COURSE
  - SMALL PARK
  - GOLF COURSE OR COUNTRY CLUB
- INDUSTRIAL**
  - FACTORY OR INDUSTRY
  - SEASONAL INDUSTRY
- CHURCHES AND CEMETERIES**
  - CHURCH
  - CEMETERY
  - CHURCH WITH CEMETERY ADJACENT
- EDUCATION**
  - SCHOOL
- MISCELLANEOUS STRUCTURES**
  - ARMORY
  - FORT, ARMY CAMP

GENERAL HIGHWAY MAP  
**TISHOMINGO COUNTY**  
 MISSISSIPPI  
 © 1997

MISSISSIPPI DEPARTMENT OF TRANSPORTATION  
 PLANNING DIVISION  
 IN COOPERATION WITH THE  
 U.S. DEPARTMENT OF TRANSPORTATION  
 FEDERAL HIGHWAY ADMINISTRATION  
 TRANSVERSE MERCATOR PROJECTION,  
 STATE PLANE COORDINATE SYSTEM 1983

DATA SOURCES	
1992 ASCS AERIAL PHOTOS	
1987 USGS DLG	
1993 MDT FIELD INVENTORY	
2000 POPULATION 19,163	
1976 BEAT LINES	



MISSISSIPPI DEPARTMENT OF TRANSPORTATION  
 "COPYRIGHT LICENSE AGREEMENT"  
 With the purchase of this map, the Mississippi Department of Transportation grants you the right to use the copyrighted map as set forth below:  
 The map is owned by the Mississippi Department of Transportation and is protected by the United States copyright laws and international provisions. You are required to use the map like any other copyrighted material, which means you may copy the map in whole or in part, without modification, provided the notice of copyright by the Mississippi Department of Transportation is displayed on a permanent basis on each copy of the map.  
 You have a copy-free right to reproduce and distribute the copyrighted map in whole or in part, without modification, provided the Mississippi Department of Transportation copyright notice is displayed in a permanent visible location on each reproduction. Any modification of a map voids this agreement and reserves your license to use, copy, and distribute the map. Use of modified maps is strictly prohibited and is subject to prosecution under State and Federal laws.  
 This agreement is governed by the Laws of the State of Mississippi, U.S. Federal Law, and U.S. International Treaties.  
 Should you have any questions concerning this agreement, please write: Mississippi Department of Transportation, Planning Division, Post Office Box 1000, Jackson, Mississippi 39205-1000.

88°25' 1 88°20' 2 88°15' 3 88°10' 4 88°05' 5 87°55' 6

340000 m 350000 m 360000 m 370000 m 380000 m

610000 m 620000 m 630000 m 640000 m 650000 m 660000 m 670000 m 680000 m 690000 m 700000 m 710000 m 720000 m 730000 m 740000 m 750000 m 760000 m 770000 m 780000 m 790000 m 800000 m 810000 m 820000 m 830000 m 840000 m 850000 m 860000 m 870000 m 880000 m 890000 m 900000 m 910000 m 920000 m 930000 m 940000 m 950000 m 960000 m 970000 m 980000 m 990000 m 1000000 m

GENERAL HIGHWAY MAP TISHOMINGO COUNTY MISSISSIPPI

GENERAL HIGHWAY MAP TISHOMINGO COUNTY MISSISSIPPI