

WINTER 2008

Issue: 21

# McVicker, Moreland, Pinnell, Scruggs; and allied families

## A Family History Newsletter



<a href="#"><u>Welcome</u></a>	<a href="#"><u>Feature Article</u></a>	<a href="#"><u>News Of Interest To The Family Historian</u></a>	<a href="#"><u>News On Our "Family Tree"</u></a>
<a href="#"><u>What's New At The Website??</u></a>	<a href="#"><u>Surname Search</u></a>	<a href="#"><u>Research Connections</u></a>	<a href="#"><u>Contact Information</u></a>

## WELCOME

### *Hello Everyone;*

Welcome to our WINTER 2008 issue of this family newsletter, and a special "hello" to new subscribers from the Warnock-Dowdle family research group. We've included all of you on our mailing list because you are either close family, a gen-cousin or genealogist who shares a common interest of searching for information on the family surnames associated with our maternal family line.

You have probably noticed that we've changed the formatting of the newsletter from the "web view" to what is referred to as the "print view". This was done for two reasons. First, several of our readers like to print a copy of the newsletter for their files or to pass on to other family members but could not print each entire page in the old format. Secondly, some of you may not have a compatible word-processing program to properly view our newsletter. If this is your situation you can now view and read the contents of this letter through the [Adobe Reader](#) program which everyone with internet can easily download.

The subject of our feature article is William C. Rhodes. Born 1820 in Tennessee he and his family migrated west to California in a wagon trail in 1857.

As such they have been recognized as one of the earliest pioneer families of Tulare county.

In addition to some general topics of interest for the family historian, the SCRUGGS surname is featured in the Surname Search section. "Surname Search" displays matches of a surname in our database to the huge resources found at RootsWeb.com.

Don't forget to review new information relative to what has been updated in our maternal family database at the Rootsweb World Connect Project, as well as recent happenings with regard to our website at RootsWeb's Freepages. A quarterly accounting of our database at Rootsweb shows that five new direct ancestral family lines were uncovered. In addition 306 new records have been added.

As always we will attempt to keep the newsletter brief but informative and hope you will enjoy reading it. If you do not want to remain on our mailing list please let us know and we will stop sending to you. To read our previous newsletters, visit this link [http://freepages.genealogy.rootsweb.com/~tqpeiffer/Documents/NEWSLETTER%20Archive%20MMPS%20\(ToC\).htm](http://freepages.genealogy.rootsweb.com/~tqpeiffer/Documents/NEWSLETTER%20Archive%20MMPS%20(ToC).htm).

*Fred & Tom*

## A QUOTE TO NOTE

*"Until you make peace with who you are, you'll never be content with what you have." - Unknown*

## FEATURE ARTICLE

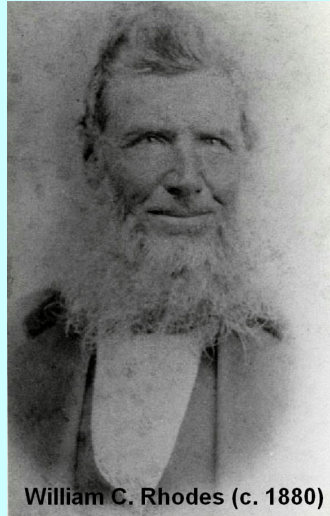
## Ancestor Profile: William C. Rhodes

*our 3<sup>rd</sup> great-grandfather*

William Calvin Rhodes was born in Tennessee around 1820. The probable location of this event, Knox county, is in the eastern part of the state near McMinn county. Nothing is known of his parents nor any of the particulars of his childhood.

In 1848, William married Sarah Douglass a native of McMinn County, Tennessee where the event took place. Around 1849 he and Sarah removed west and settled in Rusk county, Texas where at least five of their twelve children were born between 1849 and 1856. The 1850 census shows the family consisting of William (age 28), Sarah (age 19), and Thomas (age 10 months). During this time William apparently left home frequently to roam the West possibly even traveling to the California gold fields. It is known that on April 22, 1852 Sarah filed suit against William in the Smith county, Texas District Court, and that on October 27th of that same year was granted a divorce from William.

According to Julia Rhodes's son Samuel Roy, Sarah came to California in 1857 by herself with her children because William was already there. It is more probable though that Sarah and William had resumed life together in Texas by 1857 when they made preparations for the journey to California. The family now consisting of their five eldest children joined up with the Duke and Turner wagon train and began the long and dangerous trek west in the summer of the aforementioned year. At the Platte River it was necessary to block up the beds in the wagons to keep them out of the water during the



William C. Rhodes (c. 1880)

crossing. According to Sarah a box did float off with three children and their mother in it.

During their journey the Rhodes family narrowly missed becoming involved in the now famous Utah Territory massacre at Mountain Meadows where, according to historical accounts, all of the members of the Baker-Fancher wagon train, save seventeen children, were murdered by Indians and Mormons on September 11, 1857. It is known that the wagon train containing the Rhodes family did travel with the Baker-Fancher company from time to time for mutual protection due to stalking from Indians. The frequency of this harassment was probably due to fact that the Duke group had a sizable herd of cattle. It is also probable that because of the difficulties with moving the herd the Duke and Turner wagon train was two or three days behind the ill-fated Baker train on that awful day. After learning of the massacre the train, in which the Rhodes family was traveling, followed a mail train driven by two Mormons, Sidney Tanner and William Matthews, in company with three immigrant wagons. They were subsequently guided on a trail skirting the meadow at night a week after the tragedy. Because of this decision they had to take a circuitous route over a very dangerous and mountainous country. So steep was the terrain that the wagons had to be let down over the mountains by ropes. The oxen were able to get down by themselves, but could never have done so while hitched to a wagon.

Although it took the party several months to cross the plains and mountains the Duke-Turner wagon train eventually arrived safely in San Bernardino, California on October 1. It was from these various immigrant wagon parties that newspapers in Los Angeles and San Francisco pieced together a story of the attacks that so outraged the nation.

Upon arrival in California William traded his team and wagon to some Mormons for a furnished

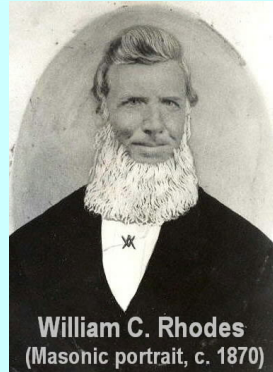
*continued on page 3*

see William C. Rhodes, page 2

home.\* The Rhodes family settled at San Bernardino, where they lived for about two or three years. During this time his son Will Rhodes was born. Around 1858 William returned to Tennessee via the [Isthmus of Panama](#) to bring back more animal stock. On the return trip he left the stock at Huston Brothers in near [Carson City](#) for the winter. Unfortunately they all died before spring.

By 1860 the family had moved on to [Tulare county](#) locating near the present site of Farmersville. Due to their early arrival William, Sarah and their children have been recognized by local historians as one of the pioneering families of the county. William purchased 40 acres of land in Tulare county on June 25, 1860 and another 40 acres on August 11th of that year. The family consisting of William, Sarah and six children are found in the 1860 census of Tulare County living near the town of [Visalia](#). Although William listed his occupation as a carpenter in the census it is known that he was also engaged in farming and the raising of stock. He later continued to work as a stockman raising cattle and sheep. A newspaper article in August of 1865 describes how William and his son Thomas were attacked and

severely injured by a grizzly bear while herding sheep in the Yokoli Valley located about 30 miles north of [Porterville](#).



William C. Rhodes  
(Masonic portrait, c. 1870)

William Rhodes and his family are found in the 1870 census as living in Tule River Twp. The 1880 census shows only Sarah and four of their children. It is assumed that William was off wandering again. It is known that he was a member of the Masonic order and his

political affiliation was Democrat.

William Rhodes died in 1888, at the age of 68 years. He may have been "bushwhacked" or committed suicide somewhere in the frontier in Texas or Mexico.

\* In 1851 [Brigham Young](#) had sent a group of Mormons into the San Bernardino area where they purchased an existing ranch and laid out a town by 1852. About 1400 Mormons settled there, cultivating 4000 acres. In the summer of 1857 Brigham Young recalled the people from the San Bernardino colony along with others from the Carson City, Nevada area back to Utah due to the pending [Utah War](#).



## NEWS OF INTEREST TO THE FAMILY HISTORIAN



### How To Use Google Books

contributed by Debra Johnson

When Fred first asked me to write this article for this newsletter, I was not sure that I knew enough about how the Google Book functions to help anyone else. The fact is though that Google has made this search capability very easy for anyone to use.

There are a couple of ways in which to access Google Books, <<http://books.google.com/>>. If it is not already listed above the Google search block as one of the several choices offered, the first way is by going to Google Search at:

<<http://www.google.com/webhp?btnG=Search&hl=en&rls=GGLJ.GGLJ:2006>>.

and entering your ancestor's name and then clicking on the "book" choice below one of the returns or in the pull-down menu under "more" at the top of the page. Sometimes the results will provide a full book (*noted in green at bottom left*) and in others it will only bring up

parts of a book. In either case, you don't have to look all through the book to find the only bring up parts of a book. In either case, you don't have to look all through the book to find the person you are trying to find. The name of the person you are researching is highlighted for ease of location.

The other way of accessing Google Books is to go to your Google page and type in Google Books. That will provide a return that can take you to the Google Books search function. Again, you can search either by an ancestor's name, historical location or the name of a book. I usually type in the person's name, because Google will then scan a complete listing of books to locate that person's name. Often in places that I didn't expect to find it. And don't forget to try alternate spellings of your ancestor's surname.

*continued on page 4*

see *Google Books* on page 3

There are two different ways that books will appear. Some books are scanned in completely while others require the author's permission to scan only certain portions of a book. If the book is completely scanned, it will bring up the first page with the location or your person's name on it. I prefer the books that are completely scanned, because when you are finished with one name, you can scroll up and down through the other pages to see if there is anything else you need. You may also enter additional search information into a box on the right side of the page. There may be information about the area your ancestor is from, occupation or if they were in a battle and there may be more information on the battle. The other good thing about this kind of book is that you can download it to your computer to look at it later.

The books where the authors have only given

copyright permission for certain parts of the books are fine however, when you type in your ancestor's name, it brings up a little window with only one or two sentences in it. There may be several little windows with your ancestors name in it to choose from but you still do not have access to a complete book in which to search out other information.

One good thing about going directly into Google Books is that you are able to put a book in your library so you can come back to it quicker next time. You do have to register at: <https://www.google.com/accounts/Login?service=print&continue=http://books.google.com/books%3Fop%3Dlibrary&hl=en> to be able to open a Google Books library, but it is a free service so it doesn't cost you anything.

I hope this has helped and/or encouraged some of you to try Google Books in your research for your ancestors. I know that I have found some great information on my ancestors using the Google Books function.

## Are You Spending Too Much for Online Subscriptions?

A surprisingly large amount of information on subscription database sites is available free on other sites. For example, Ancestry.com charges you for WWII enlistments, 1938-1946, but they're free in the National Archives' Access to Archival Databases at <http://aad.archives.gov/aad/series-description.jsp?s=3360>.

But no-cost versions of databases can be tricky to find. Since we like you guys so much, we going to let you in on a good thing and that is the [Alternative Access chart](#) from the November 2007 issue of *Family Tree Magazine*. This chart features links to

free sources of 20-plus databases from paid sites (such as Ancestry.com). See the chart at: <http://www.familytreemagazine.com/articles/nov07/1107alternatives.pdf>, then visit the *Family Tree Magazine* Products Forum at: <http://www.familytreemagazine.com/forum/forums/thread-view.asp?tid=567> to share subscription databases you've found free elsewhere online (and where you've found them).

*EDITOR'S NOTE: If you have any ideas, and or information you might have regarding ways to enhance our researching experiences. Send them to me at [silrem@comcast.net](mailto:silrem@comcast.net).*



## A "FAMILY TREE" TREE GROWS AT ROOTSWEB



### Twenty-Nine New Surnames Added To Our Database Three New Generations added to the Lineberry Lineage

An updated version of our database was recently uploaded to the World Connect site at RootsWeb.com. **306** new names have been added to our database over the past three months. We now have information on **2,751** persons. Since we update the database quarterly to coincide with the publishing of this newsletter our readers are all reminded to take a look at what is new with our

website out you may find some new information that will enhance your own research or you may find some errors in ours that we need to know of. A listing of all new surnames may be viewed at: [http://freepages.genealogy.rootsweb.com/~tqpeiffer/Documents/Home%20Page%20\(MMPS\).htm](http://freepages.genealogy.rootsweb.com/~tqpeiffer/Documents/Home%20Page%20(MMPS).htm)

To access the database at RootsWeb just click on the following link: <http://wc.rootsweb.com/cgi-bin/igm.cgi?db=jemoreland&I11.x=15&I11.v=6>.



family history research. If you do check the

*continued on page 5*

see "Family Tree" on page 4

You may also access our family tree by going to <http://worldconnect.rootsweb.com/>. On that page you will see on the left column a box entitled "jump to a specific tree". Type in *jemoreland* and

click on "go", or just search for any name in the database and you will be taken to that record.

Please know that we would always welcome any new information that you may have on our common ancestors.



## WHAT'S NEW AT THE WEBSITE??



### *Our Maternal And Paternal Ancestors: 350 Years Of History In America*

#### **New Web Page For Military Unit and Veteran Images Seven New Surname Pages Added**

The discovery that an ancestor was involved in one of our national wars or conflicts is usually an exciting and fulfilling event. In an effort to add more depth to this experience a new web page entitled [Military Veteran & Unit Image Archives](#) has been uploaded to the website. This and other pages are being constructed to better describe the military units in which ancestors served during time of war. To complement this endeavor many images and photographs related to these military units are being collected and placed into the aforementioned an archive for other researchers to access in the future.

You are invited to take a look at our seven new surname pages on the MMPS Home Page at, [http://freepages.genealogy.rootsweb.com/~tqpeiffer/Documents/Home%20Page%20\(MMPS\).htm](http://freepages.genealogy.rootsweb.com/~tqpeiffer/Documents/Home%20Page%20(MMPS).htm).

Our recent investigations has uncovered new information about the Beard, Edney, and Tomson families of Somerset county, England; the Brumwells' of Middlesex County, Virginia and the Lawson family of Midlothian, Scotland. We've also discovered two new immigrant ancestors

Peter Pasque c. 1650 from England to Virginia, and Jacob Leyenberger (Linberry) from Germany.

Over the past three months many new web pages and images have been created and added to [Ancestral Locations](#). The home page has been revised. In addition, new image galleries have been constructed for a wide variety of locations in the United Kingdom, and Germany.

Because we usually update this site several times between the publishing of this Newsletter you are reminded and encouraged to take a look at what is new with regard to the family information and genealogical resources contained at our internet site [Our Maternal & Paternal Ancestors 350 Years of History in America: An Archive of Genealogical Information](#). For access use the following address, <http://freepages.genealogy.rootsweb.com/~tqpeiffer/>.

It is hoped that you will find new information that will enhance your own research or you may want to advise us of some new information that we can include at the site. Either way we would appreciate an email from you just to let me know that you've found your way to our online website.

#### **NEW AND REVISED "MMPS" SURNAME PAGES:**

[Beard](#); [Brumwell](#); [Edney](#); [Lawson](#); [Lineberry](#); [Pasque](#); [Tomson](#); [Waller](#);

#### **NEW "MMPS" SOURCE DOCUMENTS:**

[Genealogy Research of Dorothea Rhodes](#); [John P. Moreland \(1913 Cert. Of Homestead\)](#); [John P. Moreland \(1913 Deed of Sale to Martha L. Silban\)](#); [They Came West \(by D. Rhodes\)](#); [William C. Rhodes \(1865 bear attack news article\)](#); [Thomas Rhodes Deed \(6 Sep 1887\)](#); [Thomas Rhodes Deed \(18 Jan 1887\)](#); [Thomason, Wesley A. & Rosa \(1917 Oklahoma Deed\)](#)

**NEW "MMPS" FAMILY PHOTOS / IMAGES:**

[Richard Alexander Rhodes Family, c. 1933](#); [Thomas Rhodes Family c.1900](#);  
[Martha Waites Rhodes, son & daughter, c.1923](#)

**NEW & REVISED ANCESTRAL LOCATION PAGES:****USA STATES & COUNTIES:**

[South Carolina](#); [Tennessee](#); [Maries Co., MO](#);  
[Middlesex Co., VA](#); [Muskingum Co., OH](#); [Richmond Co., VA](#);

**WORLD STATES & LOCALITIES:****GERMANY**

[ENZ: Bauschlott](#); [HEILBRONN: Lehensteinsfeld](#);  
[KARLSRUHE: Blankenloch; Neureut; Kraichtal \(Oberacker; Unterowisheim\); Staffort; Sulzfeld](#);  
[RHEIN-NECKAR: Sinsheim \(Hoffenheim\); Angelbachtal \(Michelfeld\)](#)

**UNITED KINGDOM**

[LANCASHIRE: Chipping; Forest Bowland; Goosnargh; Melling; Preston; Salterforth](#);  
[SOMERSET: Milverton; Wiveliscombe](#); [MIDLOTHIAN: Cockpen](#)

**NEW & REVISED PHOTO AND IMAGE ARCHIVES:****U.S.A**

[Chester Co., SC](#); [Middlesex Co., VA](#); [Muskingum Co., OH](#);  
[Richmond Co., VA](#); [Tulare Co., CA](#); [York Co., SC](#);

**GERMANY (Districts / Kreis)**

[Dilligen](#); [Enz](#); [Heilbronn](#); [Karlsruhe](#); [Rhein-Neckar](#);

**UNITED KINGDOM**

[Gloucestershire, England](#); [Lancashire, England](#); [Midlothian, Scotland](#); [Somerset, England](#);

**MILITARY**

[6<sup>th</sup> Navy Special Construction Battalion \(World War II\)](#); [87<sup>th</sup> Navy Construction Battalion \(World War II\)](#);  
[28<sup>th</sup> Infantry Division \(World War I\)](#); [2<sup>nd</sup> Virginia Cavalry CSA \(Civil War\)](#);  
[12<sup>th</sup> NJ Volunteer Infantry USA \(Civil War\)](#); [Continental Line, 10<sup>th</sup> VA Regiment \(Revolutionary War\)](#);

**OTHER NEW & REVISED WEB PAGES:**

[Research Tools](#); [Military Image Archives](#)

**RESEARCH CONNECTIONS**

Since the first issue of this newsletter was created back in the Fall of 2002 its distribution list has quadrupled. Along the way we have interacted with many genealogists that have expressed an interest in one or more of the family lines contained within our MMPS database <<http://wc.rootsweb.com/cgi-bin/igm.cgi?db=jemoreland&I11.x=15&I11.y=6>> located at Roots Web. Because networking is a key to the success of any family historian we feel that it is important for this newsletter to help in making that connection. Below is a listing of several subscribers and the common family lines they are researching.

*continued on page 7*

Who	Researching Surname(s)	Who	Researching Surname(s)
Debbie Johnson <a href="mailto:angelladv862@hotmail.com">angelladv862@hotmail.com</a>	Warnock, Dowdle	Savannah Jordon <a href="mailto:lakegirltyler@yahoo.com">lakegirltyler@yahoo.com</a>	Moreland, Jones
Vanelle Mangers <a href="mailto:grandmagers@gvtc.com">grandmagers@gvtc.com</a>	Bishop, Hardy	Sherry Veith <a href="mailto:NONAMELDY52@aol.com">NONAMELDY52@aol.com</a>	Bennett
Susan Norton <a href="mailto:nortoncrew@cableone.net">nortoncrew@cableone.net</a>	McVicker	Randy H. Schmidt <a href="mailto:peshewa@insightbb.com">peshewa@insightbb.com</a>	Thomas Holeman (1675-1723) m. Mary Moreland
Mary Flegel <a href="mailto:marvflegel@cableone.net">marvflegel@cableone.net</a>	Johnson	Charlene Haney <a href="mailto:cghaney@sbcglobal.net">cghaney@sbcglobal.net</a>	Walker
Dave Hayt <a href="mailto:davehayt@earthlink.net">davehayt@earthlink.net</a>	Robert Douglass Family	Karen Wood <a href="mailto:KWood10023@aol.com">KWood10023@aol.com</a>	Giles Carter descendants

If you would like to be included on this list or if should any of the above named persons would like their information deleted or revised contact Fred at [silrem@comcast.net](mailto:silrem@comcast.net).

SURNAME SEARCH			
SCRUGGS			
Featured Databases	Matches	<a href="#">Pre-1920 Births</a>	16
<a href="#">WorldConnect</a>	27,743	Other Searches	Matches
<a href="#">Social Security Death Index</a>	5,383	<a href="#">Alumni Lists</a>	13
<a href="#">Rootsweb Surname List</a>	60	<a href="#">Book Indexes</a>	1
Vital Records	Matches	<a href="#">Cemetery Listings</a>	21
<a href="#">California Death Index</a>	364	<a href="#">Census Records</a>	32
<a href="#">Texas Death Index</a>	453	<a href="#">BLM/GRO Land Records</a>	95
<a href="#">Kentucky Death Index</a>	330	<a href="#">Obituaries</a>	33
<a href="#">Kentucky Marriage Index Husband</a>	99	<a href="#">British, UK and Ireland Data</a>	2
<a href="#">Kentucky Marriage Index Wife</a>	81	<a href="#">Military Records</a>	9
<a href="#">Maine Death Index</a>	1	<a href="#">Newspaper Indexes</a>	6
<a href="#">World War One Draft Index</a>	131	<a href="#">Tax and Voter Lists</a>	2
<a href="#">Early Death Records</a>	46	<a href="#">Professional, Society, Religious Groups</a>	4
<a href="#">Pre-1920 Marriages</a>	29	<a href="#">Obituary Daily Times</a>	1,355

"Surname Search" features matches, found at RootsWeb.com < <http://searches.rootsweb.com/> > of a surname from my database. Follow the links to information that may be useful and hopefully rekindle your own research into this family as well as other topics at RootsWeb. To see what information we have uncovered on this family follow the links to our website at <http://freepages.genealogy.rootsweb.com/~tqpeiffer/index.htm>, and database at <http://wc.rootsweb.com/cgi-bin/igm.cgi?db=jemoreland&I11.x=15&I11.y=6>.

CONTACT INFORMATION	
<p>"McVicker, Moreland, Pinnell, Scruggs and allied families" is a family-history newsletter published quarterly by Frederick G. Siler, 889 Dante Court, Mantua, New Jersey 08051. It is available both in print and online. Print copies may be obtained through written correspondence that includes an SASE.</p>	<p>The online version is sent as an attachment via email. Issues are also posted at: &lt;<a href="http://freepages.genealogy.rootsweb.com/~tqpeiffer/Documents/NEWSLETTER%20Archive%20MMPS%20(ToC).htm">http://freepages.genealogy.rootsweb.com/~tqpeiffer/Documents/NEWSLETTER%20Archive%20MMPS%20(ToC).htm</a>&gt;. Submissions of articles, photos, documents, etc., are strongly encouraged. Please email to <a href="mailto:silrem@comcast.net">silrem@comcast.net</a>.</p>

My ancestors did WHAT?